

Essex Climate Action Commission

Visit Essex

Samantha Kennedy
Director Environment & Climate Action

Net Zero: Making Essex Carbon Neutral can be found [here](#)
ECAC website www.essexclimate.org.uk



Essex County Council

Essex Climate Action Commission

- Cross-party
- Brings together experts from Academia, Climate Scientists, the Public Sector and Business Leaders e.g. UN Chief Scientific Adviser, senior academics from all 3 Essex Universities, representatives from major businesses, charities and trade associations.
- Appointed Independent Chair – Lord Randall of Uxbridge
 - Identified for his significant experience in both national government and the private sector.
 - Life peer in the House of Lords.
 - Was Special Advisor on the Environment to the former Prime Minister, Theresa May
 - served as a trustee of the RSPB
 - special envoy on modern slavery to the Mayor of London
 - member of the Environment, Transport and Regional Affairs Select Committee
- Appointed two Young Essex Assembly members to the Commission as co-chairs

Climate Challenge

UK Domestic Green House Gas Emissions (GHG) by Sector 2019

Source: BEIS, HMG



Others include Public, Industrial Processes and the Land Use, Land Use Change and Forestry (LULUCF) sectors. The percentages may not sum to 100% due to rounding.

[Final UK greenhouse gas emissions national statistics: 1990 to 2019 - GOV.UK \(www.gov.uk\)](https://www.gov.uk/government/statistics/final-uk-greenhouse-gas-emissions-national-statistics-1990-to-2019)

We are legally required to achieve net zero green house gas emissions by 2050. Government agreed milestone of 78% reduction by 2035.

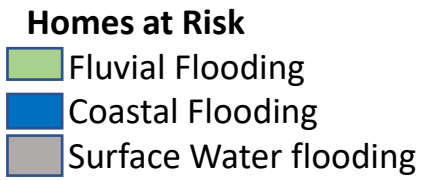
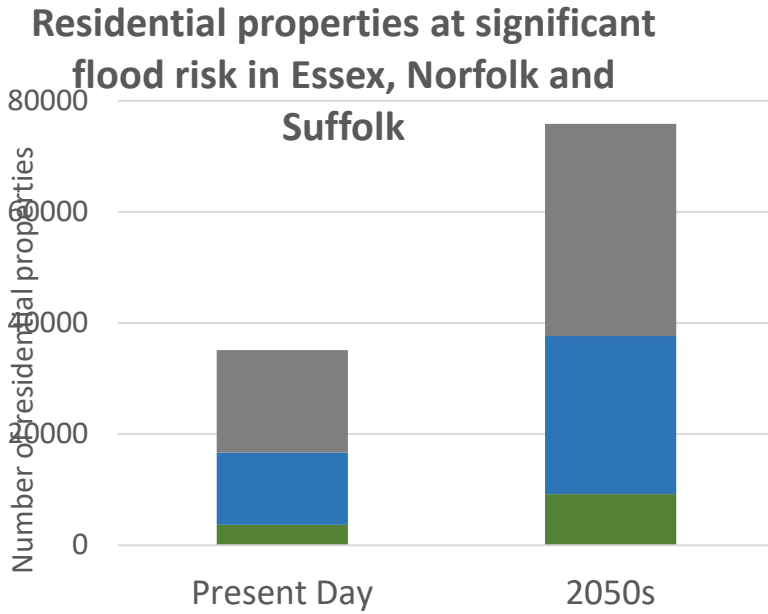
Transport is the largest contributor of green house gases in the UK, but is an even larger share of Essex emissions.

Our built environment is in line with the national average. As we do not host a heavy industrial sector, the contribution of our business sector is below the national average.

International tourism accounts for 5% of the world's CO₂, according to the United Nations, but even before the Covid-19 travel restrictions clipped wings, the industry was already seeing a rise in climate-conscious travellers



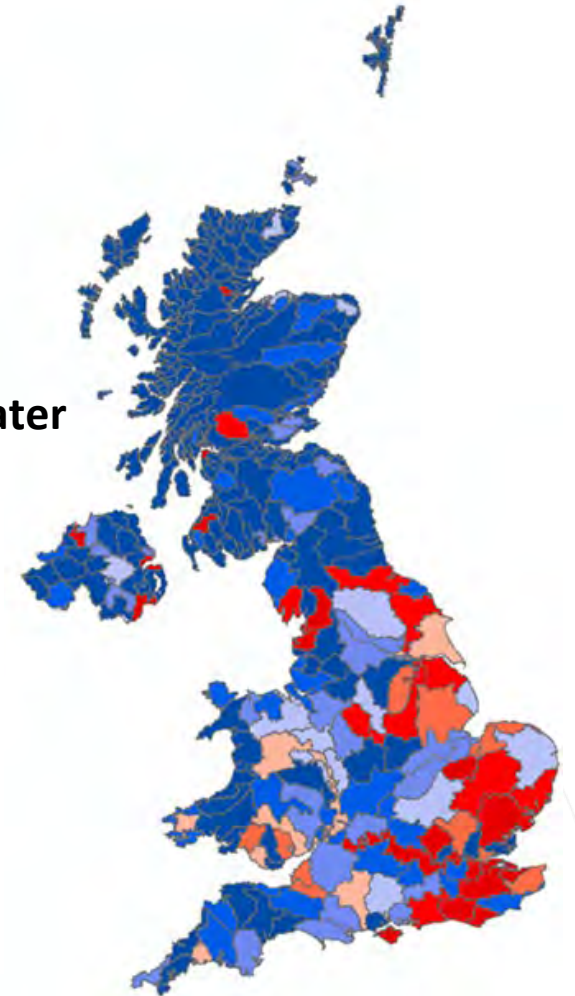
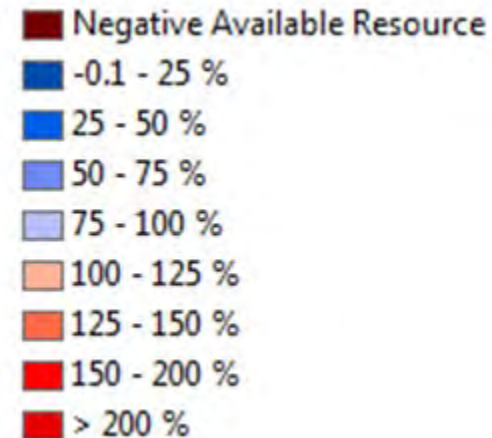
FUTURE IMPACTS: INCREASED FLOOD RISK, WATER SHORTAGES, OVERHEATING



Essex also has substantial issues with water scarcity and is one of the areas of the country with the highest levels of negative available water resource as a % of water available for abstraction in the country.

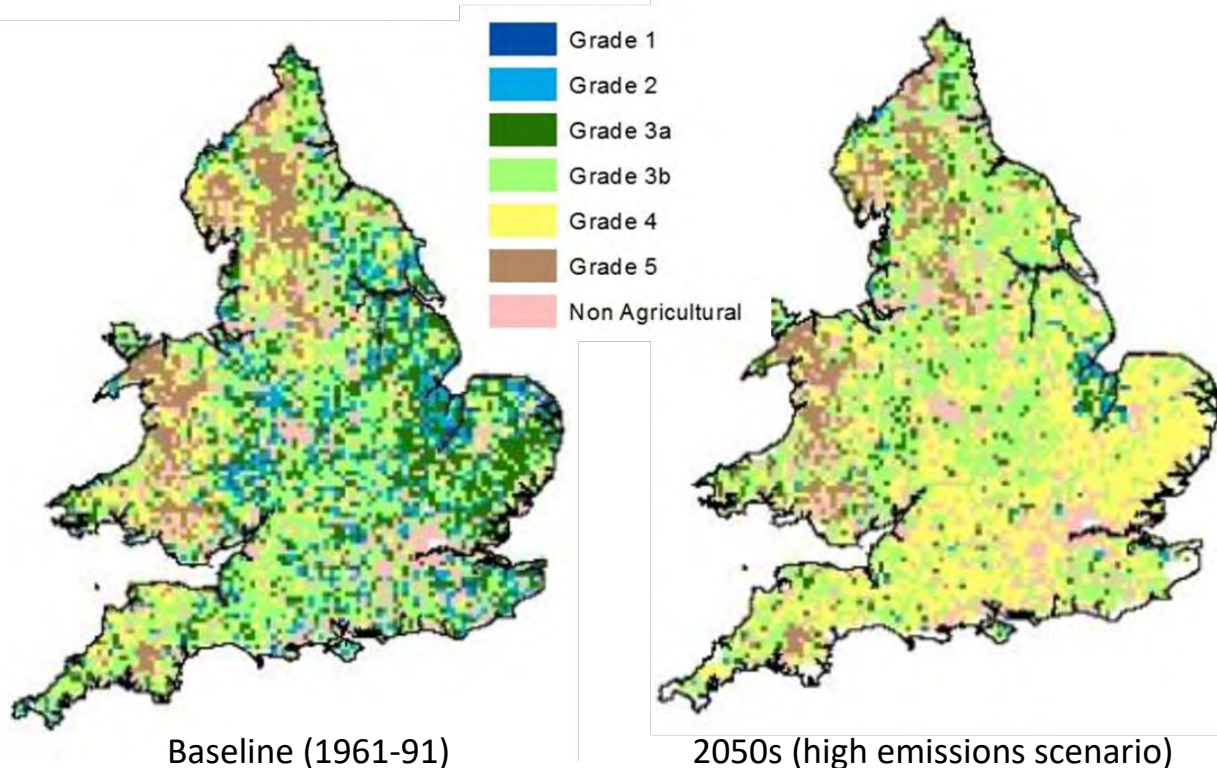
The Environment Agency estimate that for every £1 spent improving protection from flooding and coastal erosion, we avoid around £5 of property damages

Water demand as a % of water available for abstraction



FUTURE IMPACTS – AGRICULTURE AND SOILS

AGRICULTURAL LAND CLASSIFICATION IN ENGLAND AND WALES



Agriculture

Climate change will cause soil erosion – soil washed away in heavy rainfall in winter and blown away in drier summers - leading to degradation of our agricultural land and impacting our farming economy.

Subsidence Risk for Buildings & Roads

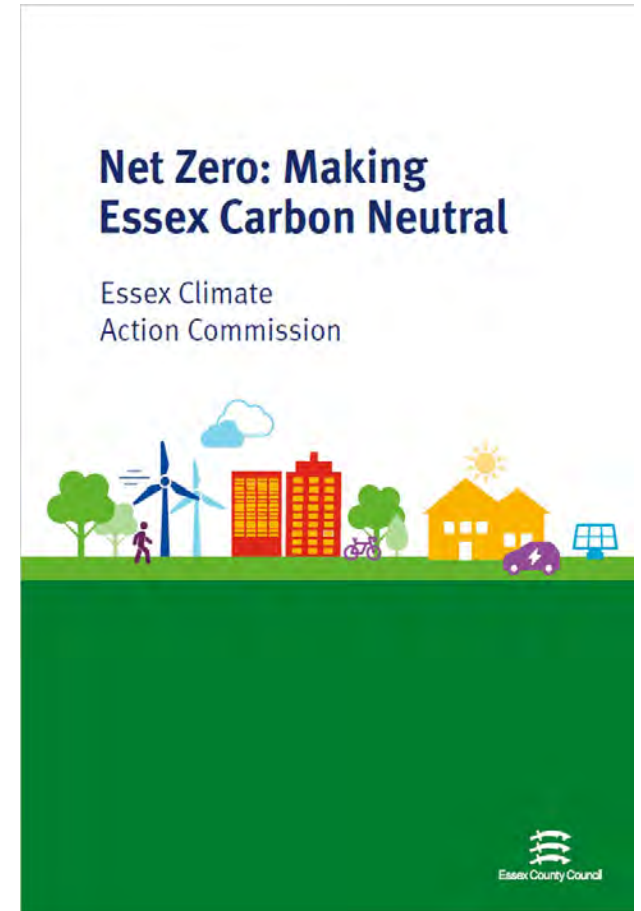
Climate change leading to hotter, drier summers, shrinks and cracks ground under houses.

British Geological Survey reports risks of clay related subsidence increases by a third by 2030 and triples by 2050.

This means the 1m homes at risk in the UK in 1990 is set to rise to 2.4m by 2030.

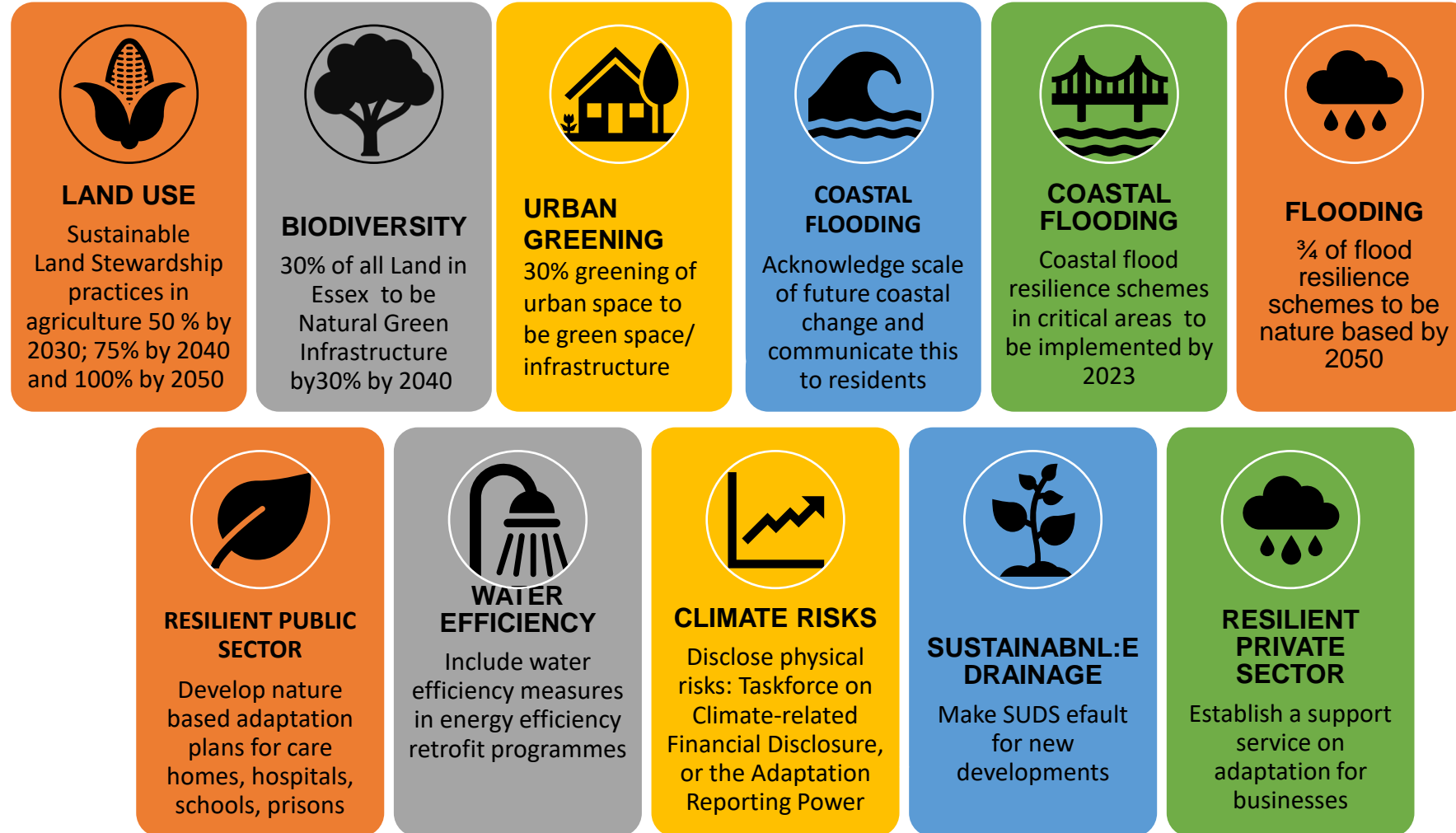
Essex is one of the key areas that will be affected.

Net Zero: Making Essex Carbon Neutral



CLIMATE COMMISSION

LAND USE, GREEN INFRASTRUCTURE, RESILIENCE



What Can You Do?

- Check your flood risk

<https://www.gov.uk/check-long-term-flood-risk>

- Keep parking areas permeable

https://assets.publishing.service.gov.uk/government/uploads/system/uploads/attachment_data/file/7728/pavingfrontgardens.pdf

- Keep it green

Gardening in a Changing Climate

[RHS Gardening in a Changing Climate report / RHS Gardening](#)

Grants Support for Planting Trees

[Essex Forest Initiative Facebook page.](#)

- Save your water

- Water company advice
- Low flow taps
- Toilet hippos
- Water butts for garden

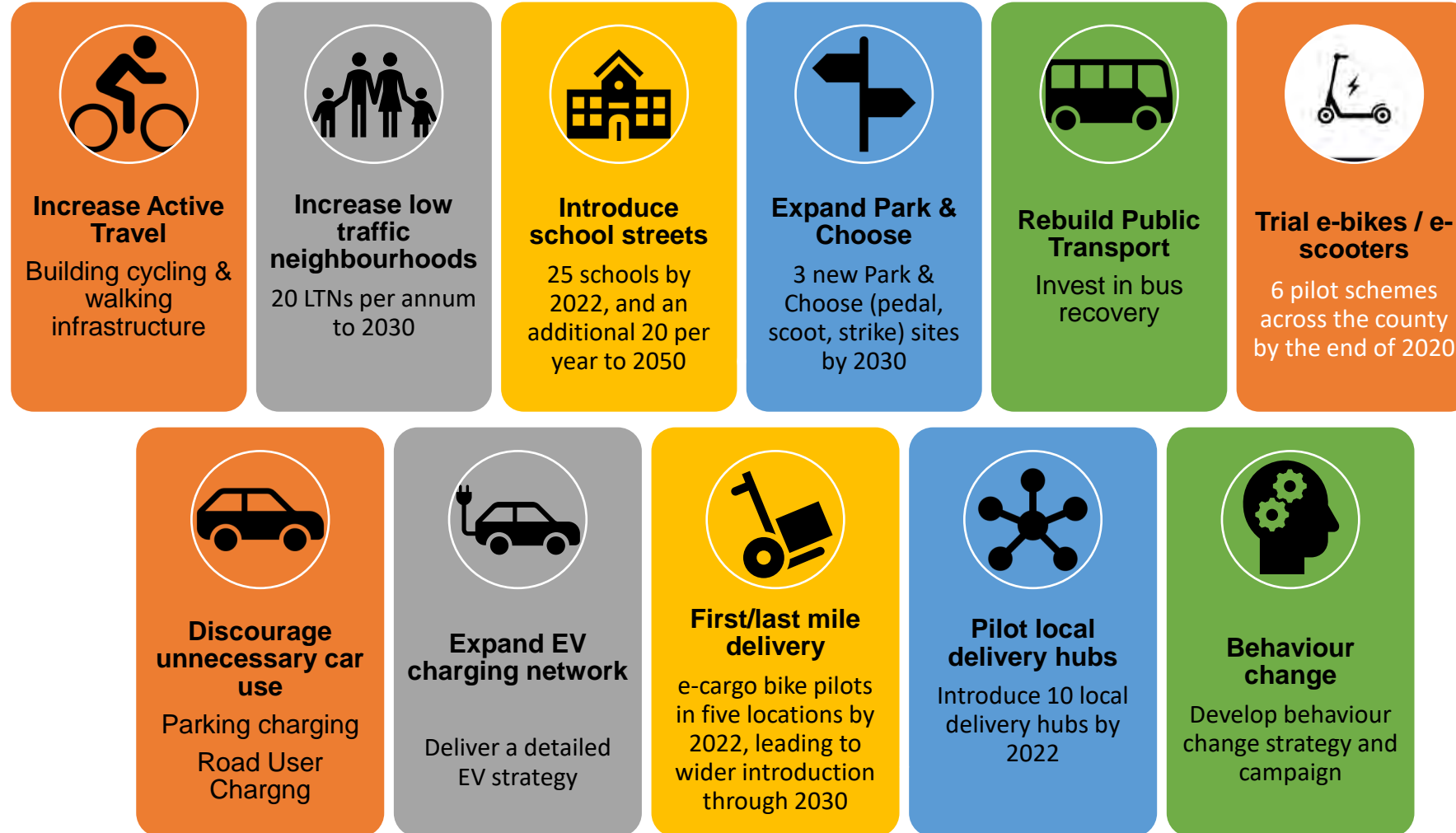
<https://esw.watersavingkit.com/>

[Save water \(anglianwater.co.uk\)](http://www.anglianwater.co.uk)

- Eat Local food & drink

[#HelpEssexBuyLocal - Buy Local South East \(buylocalfoodanddrink.co.uk\)](#)

CLIMATE COMMISSION TRANSPORT



What Can You Do?

Help guests use:

- public transport

<https://www.essexhighways.org/getting-around/bus/public-transport-maps>

- Bicycles and Escooters

[e-scooters - Essex County Council \(essexhighways.org\)](https://www.essexhighways.org/e-scooters)

Available in Basildon, Braintree, Brentwood, Chelmsford, Clacton, Colchester

- Walking Routes

[Essex walks | Essex County Council \(essexhighways.org\)](https://www.essexhighways.org/essex-walks)

Electric Vehicles

Grants available for electric vehicles and electric vehicle chargers











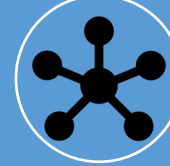


<https://www.gov.uk/government/collections/government-grants-for-low-emission-vehicles>

Shop Local

<https://www.essex.gov.uk/news/love-local-support-essex-businesses>

CLIMATE COMMISSION

ENERGY & WASTE

 <p>Solar Panels on Roofs Install Solar panels on every roof I by 2050 - 25% of rooftops by 2030.</p>	 <p>Large Scale Solar Build 1.43 GW of large scale solar on available land by 2030.</p>	 <p>Renewable Revolution Essex self sufficient in renewable energy by 2040,</p>	 <p>No Waste Heat All waste heat to be captured and reused (where local demand exists) by 2035.</p>	 <p>Hydrogen Create facilities to produce green hydrogen to fuel heavy good vehicles by 2040.</p>	 <p>Community Energy Build a network of community energy neighbourhoods by 2035.</p>	 <p>Innovation Make Essex a centre of innovation for emerging renewable technologies</p>
 <p>Recycling Accelerate recycling activity to achieve a minimum 70% recycling rate by 2030</p>	 <p>Recycling All Essex residents and businesses to have access to kerbside recycling services by 2025</p>	 <p>Green Procurement Evaluate emission impacts in all procurement decisions</p>	 <p>Waste Innovation Fund Plastic substitution, and local reprocessing capacity</p>	 <p>Behaviour change Establish a network of community-based reuse and repair hubs in Essex by 2024.</p>	 <p>Collaboration Develop the Essex Waste Partnership to fully engage with producers, industry and research bodies</p>	

What Can You Do?

Solar Together

Group buying solar panels for a significant discount on market rates

<https://solartogether.co.uk/essex/home>

LoCASE Grant Funding

[LoCASE | Low Carbon Across the South and East](#)

LoCASE provides grants for businesses of up to £10,000 as well as training workshops and fully funded events. Targeted business support is on offer for companies who offer “green” or low carbon goods and services.

Waste

Compostible one use cutlery, containers & cups

Bio-degradable gloves

Recycle part used soap

[Love Essex](#)

Green Tourism

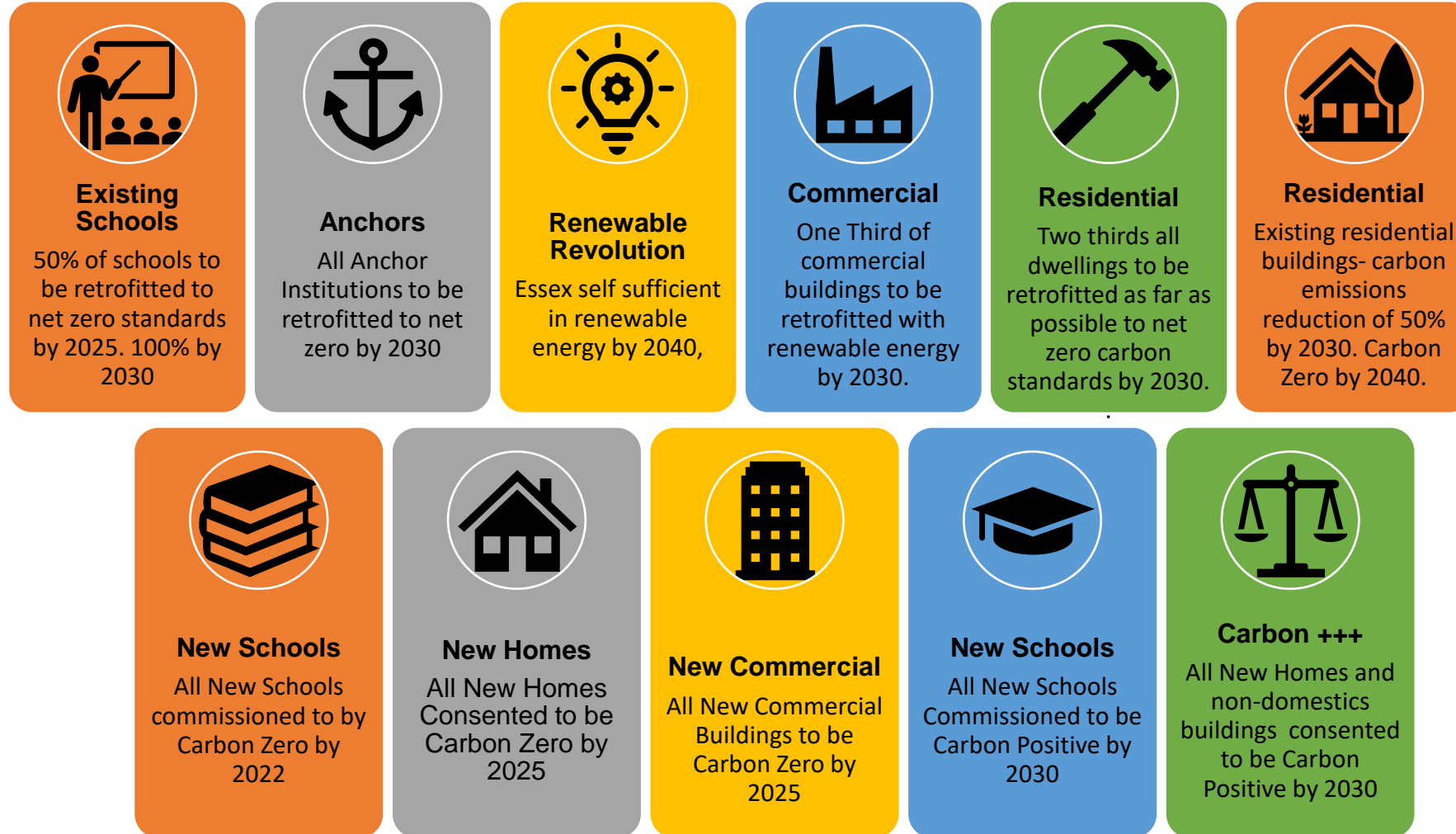
has a post Covid Sustainability Guide

<https://www.green-tourism.com/campaigns/sustainability-post-lockdown>

Waste & Resources Action Programme

[WRAP](#) may offer grants and investments supporting business waste reduction costs.

CLIMATE COMMISSION BUILT ENVIRONMENT



What Can You Do?

Energy Efficiency Advice

- The Carbon Trust offers businesses free, independent advice on efficient energy usage and installing sources of renewable energy. Use their [Green Business Directory](#) to find suppliers they have accredited. The [National Energy Foundation YouGen website](#) offers a similar tool.
- The [Energy Savings Trust website](#) lists example case studies, energy efficiency resources and runs events to help businesses make informed choices, including supply chain advice.
- The [Smallbusiness.co.uk website](#) also provides a range of online energy efficiency news for small business owners, including start-ups.
- You can check [GOV.UK's Energy Technology List](#) if you are planning new plant equipment. It covers independently verified energy-efficient products such as boilers, lighting, air conditioning and refrigeration equipment.

Grants

Government Grants

[GOV.UK business finance and support finder.](#)

Ofgem

[Find business energy efficiency grants and schemes | Ofgem](#)

[Environmental and Social schemes](#)

Grants search services

[Grants Online.](#)

Charities

[business funds some charities offer](#)

Visit Britain

Visit Britain has a whole host of further tools and advice on making your business sustainable | [VisitBritain](#)

CUSTOMER DEMAND IS INCREASING

[TUI Group](#) conducted a YouGov survey which suggests 51% of UK holidaymakers would book more environmentally sustainable holidays if they were more readily available. Oct 2019

Euromonitor International's Voice of Industry Sustainability Survey found:

- 64% of global consumers want to travel sustainably + with a purpose (April 2020)
- 76% of consumers are expected to be more concerned about sustainability after COVID (July 2020)

[Sustainable Travel Trends 2021 — Earth Changers \(earth-changers.com\)](#)

